

SIMONDS

HOTELS AND CATERING HOUSES

H. & G. SIMONDS LTD.

Brewers, Wine & Spirit Merchants

THE BREWERY - READING

Breweries and Branch Stores:

LONDON, OXFORD, CIRENCESTER, SWINDON, BRISTOL
FARNBOROUGH, STAINES, LUDGERSHALL, BRIGHTON
SOUTHSEA, BLANDFORD, DEVONPORT, BRIDGEND
NEWPORT, MON., GIBRALTAR, MALTA, ETC., ETC.

	Page		Page
BASINGSTOKE		PAIGNTON	
Red Lion Hotel	2	Gerston Hotel	30
BRIXHAM		Coverdale Hotel	32
Bolton Hotel	4	Waterside Hotel	34
CHEDDAR		PRINCES RISBOROUGH	
Bath Arms Hotel	6	Black Prince Hotel	36
CIRENCESTER		READING	
Crown Hotel	8	Ship Hotel	38
DARTMOUTH		The Cheddar Cheese	39
Royal Castle Hotel	10	Falcon Hotel	40
EGHAM		The Marquis of Lorne	42
Anglers Hotel	12	Grosvenor House	43
EYNSHAM		SALISBURY	
Evenlode House Hotel	14	The Haunch of Venison	44
FARNBOROUGH		STAINES	
Queen's Hotel	16	Angel Hotel	46
FROME		Railway Hotel	47
George Hotel	18	Pack Horse Hotel	48
HUNGERFORD		STOKENCHURCH	
Bear Hotel	20	King's Arms Hotel	50
KENNFORD		SUNNINGDALE	
Anchor Inn	22	Sunningdale Hotel	52
LONDON		SWINDON	
The Devereux	24	Goddard Arms Hotel	54
NEWBURY		WARGRAVE	
Bacon Arms Hotel	26	St. George & Dragon Hotel	56
Queen's Hotel	27	WARMINSTER	
NEWPORT		Bath Arms Hotel	58
Queen's Hotel	Cover iii	WINDSOR	
OXFORD		Grapes Bar & Restaurant	60
Eastgate Hotel	28	WOKINGHAM	
		Bush Hotel	62

*Stay at
a Simonds Hotel*

You have the choice of a Mellow
Coaching Inn by an Old Market
Place!

A Seaside Hotel at a pleasant
holiday spot!

A Quiet Hotel in a big town!

You will find them all in this book.

At every Simonds Hotel there is a
standard of service based on the
best tradition of English Inn-
keeping and all these Hotels are
fully licensed.

TEMPTING MEALS - QUIET LOUNGES - COMFORTABLE BEDROOMS

BRIXHAM

The Bolton Hotel at Bolton Cross

Every visitor to Torbay must have made pilgrimage to Brixham, that lovely Devon fishing port which has witnessed the arrival of Francis Drake, William of Orange, and the frigate Bellerophon with Napoleon on board . . . a captive.

Here, too, was written that first of all English hymns "Abide with Me"—its author, Henry Francis Lyte, being vicar of Brixham for a quarter of a century.



INFORMATION

Situated in centre of town, 400 yards from harbour; buses stop at door; G.W.R. Station $\frac{3}{4}$ mile; ten bedrooms with H. & C. Brixham provides every facility for bathing, fishing, sea cruises and yacht anchorage.

Fully Licensed.
Fires in Bedrooms.

A SIMONDS HOTEL



Brixham Harbour

The Bolton Hotel is a recent addition to the Simonds chain of hotels. While present restrictions last, major reconstruction is out of the question but those contemplating a visit to Brixham will find at this hotel, simple comfort, good fare, and clean bedrooms.

CHEDDAR

The Bath Arms Hotel in Bath Street

It takes but a few minutes to feel on friendly terms with this modernly equipped Bath Arms. Go where you will, a groomed appearance is evident. The sunny dining room, designed for speed of service, is so furnished that it makes for pleasurable eating.

Wednesday is an interesting day to visit Cheddar, because the local market is held in the courtyard of the hotel. There is really no month in which Cheddar has not its attraction, but make note of June, when the first strawberries can be picked fresh and warm from their beds, October when cider making is in full swing, and the late winter months when anemones can be picked in the sheltered valley.



INFORMATION

Situated in centre of village; buses stop at door; G.W.R. Station $\frac{1}{4}$ mile; seven bedrooms with H. & C.; garage; pleasure garden; skittle alley; Gorge and Caves ten minutes walk.

Fully Licensed.

Fires in Bedrooms.

A SIMONDS HOTEL



CIRENCESTER

***The Crown Hotel
in West Market Place***

If the bedroom allotted you is No. 7, you should know that amongst the many occupants its four walls have sheltered was King Charles II (then Prince of Wales) when, after the Battle of Worcester, he hurried from Stratford-on-Avon to this ancient Cotswold town. Tradition has it that during the early hours Cromwell's Roundheads attacked the Inn, but Charles made good his escape through the window. To-day nothing need disturb your night's tranquility in such old-world but homely surrounds, for the bedrooms are furnished to the Simonds standard, which is another way of saying *comfortably*.



INFORMATION

Situated on main Cheltenham road, opposite north door of church; buses in Market Place; G.W.R. Station $\frac{1}{4}$ mile; seven bedrooms with H. & C.; garage; centre for Cotswolds.

Fully Licensed.

Fires in Bedrooms.

A SIMONDS HOTEL



Dining Room, Crown Hotel, Cirencester

The Crown is a good centre for the lovely Cotswold Hills with their mellow houses built from local stone. Agriculture is interesting because of its mixed character. Cirencester is in the V.W.H. (Earl Bathursts) Hunt country and within easy distance of meets of the Duke of Beauforts, the V.W.H. (Cricklade) and the Cotswold Hunts. Cheltenham Race Course is but 16 miles, and the charming villages of Burford, Bibury and Stow-on-the-Wold are in the vicinity.

DARTMOUTH

***The Royal Castle Hotel
on the Quay***

Deep between the green hills of Devon flows the river Dart, and at its mouth, from which famous men sailed the seven seas, is the cradle of English seamanship. To appreciate its fascinating narrow streets and gabled houses, and to revel in the constant coming and going on its waterway, Dartmouth warrants a leisured stay.

Now that The Royal Castle is a Simonds Hotel, the holiday maker and the passing traveller can make their headquarters here with confidence. Redecorated and refurbished to keep abreast of the times, yet its historic environment remains.



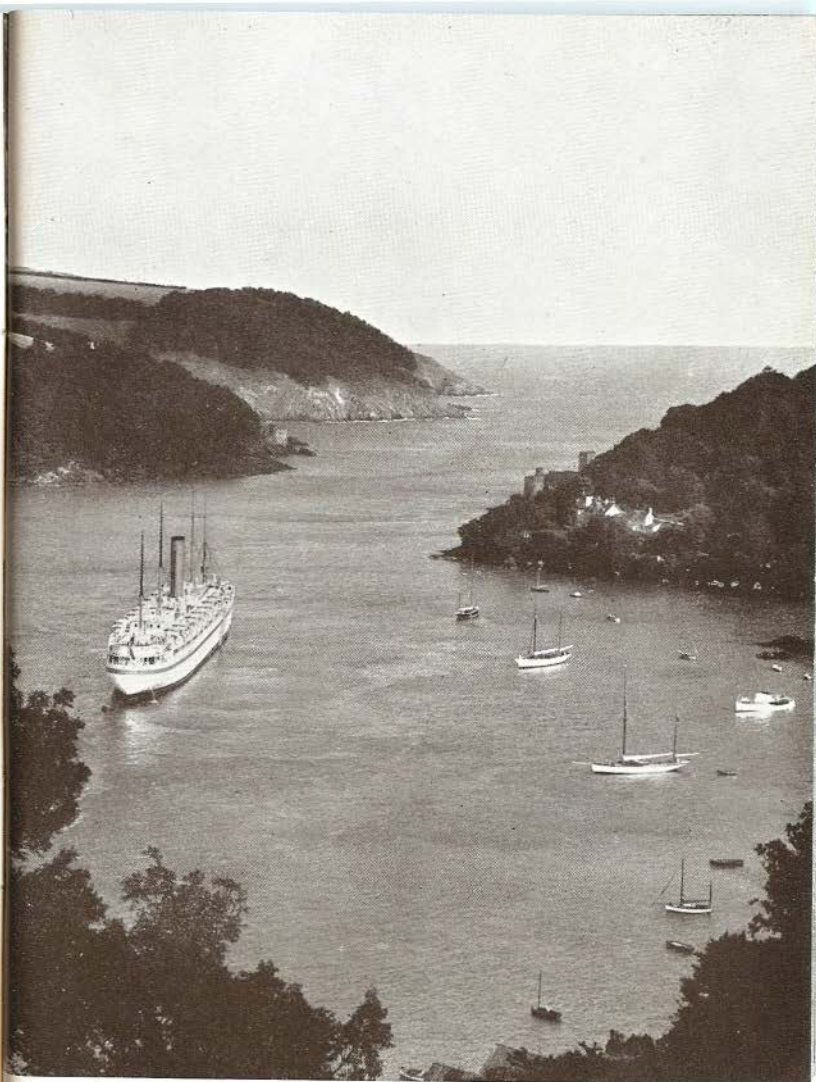
INFORMATION

Situated opposite the Boat Float and the nearest hotel to Royal Naval College; bus stop at door; G.W.R. Station and Ferry 100 yards; car park nearby; twenty three bedrooms with H. & C.; bathing, angling, river and sea trips.

Fully Licensed.

Fires in Bedrooms.

A SIMONDS HOTEL



Dartmouth Harbour
A Valentine Photograph

EGHAM

***The Anglers Hotel at
Bell Weir Lock***

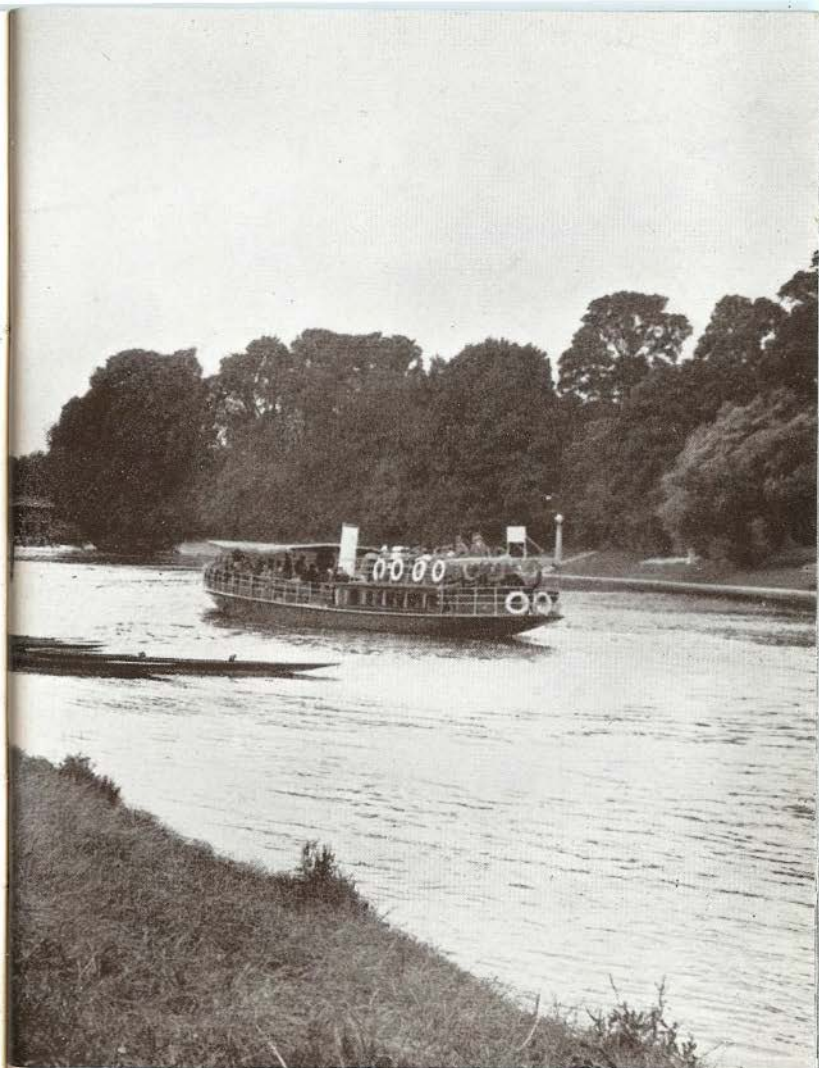
No one on the river could fail to notice this attractive house with its sunny verandahs and lawn almost at the water's edge. But motorists on the Staines-Windsor road can easily miss it unless they look out for the signboard as they approach the Staines-Egham road. It is worth a visit, for here is more than meets the immediate eye. To the dining room comes all the year round a variety of fresh garden produce from the hotel's own kitchen garden. The small but bright and airy bedrooms attract a regular flow of tired business and professional people who come to relax and leave refreshed. History has been made hereabouts, too. Runnymede meadow, scene of the signing of the never - to-be-forgotten "Magna Charta," is only a short walk away.

**INFORMATION**

Situated in own grounds of 7 acres on Thames side; Green Line buses at entrance to Runnymede Meadow; S.R. Station 1 mile; nine bedrooms; centre for racing at Windsor and Ascot; caravan camping ground.

Fully Licensed.
Fires in Bedrooms.

A SIMONDS HOTEL



EYNHAM

***Evenlode House Hotel on the
Oxford-Cheltenham Road***

Built in the Cotswold tradition, with that lovely warm coloured stone which blends with its country setting, this modern Simonds hotel casts an inviting eye on all traversing the famous road which winds its way to Oxford, to Witney, Burford, Northleach, and on through the Severn Valley to Wales. To halt awhile for a meal or refreshment at this friendly roadside house is the prelude to staying and exploring the district around, the upper reaches of the Thames, the wandering Windrush, where old and rural England lies at one's feet. Only six miles from Oxford, it makes, too, a good base for those who would explore the City by day, yet prefer the quietude of the country at night.

**INFORMATION**

Situated on the Eynsham By-Pass; buses stop at door; G.W.R. Station $\frac{1}{2}$ mile; six bedrooms with H. & C.; gardens; garage; petrol station;

Fully Licensed.

Fires in Bedrooms.

A SIMONDS HOTEL



FARNBOROUGH

The Queen's Hotel in Lynchford Road

The chief purport of this house is serving the services, seeing that it is the premier hotel in the Aldershot-Camberley area, yet it must be emphasised that it has just as much appeal to the civilian. The catering has always been of a high order, and it is quite the place, hereabouts, for taking ale, or a party to dinner.

Those motoring along that main artery to and from the West—the A30—should note that Farnborough is but a few miles distant, via the Farnham road, and with 40 bedrooms, it makes a comfortable base for a night's stay.

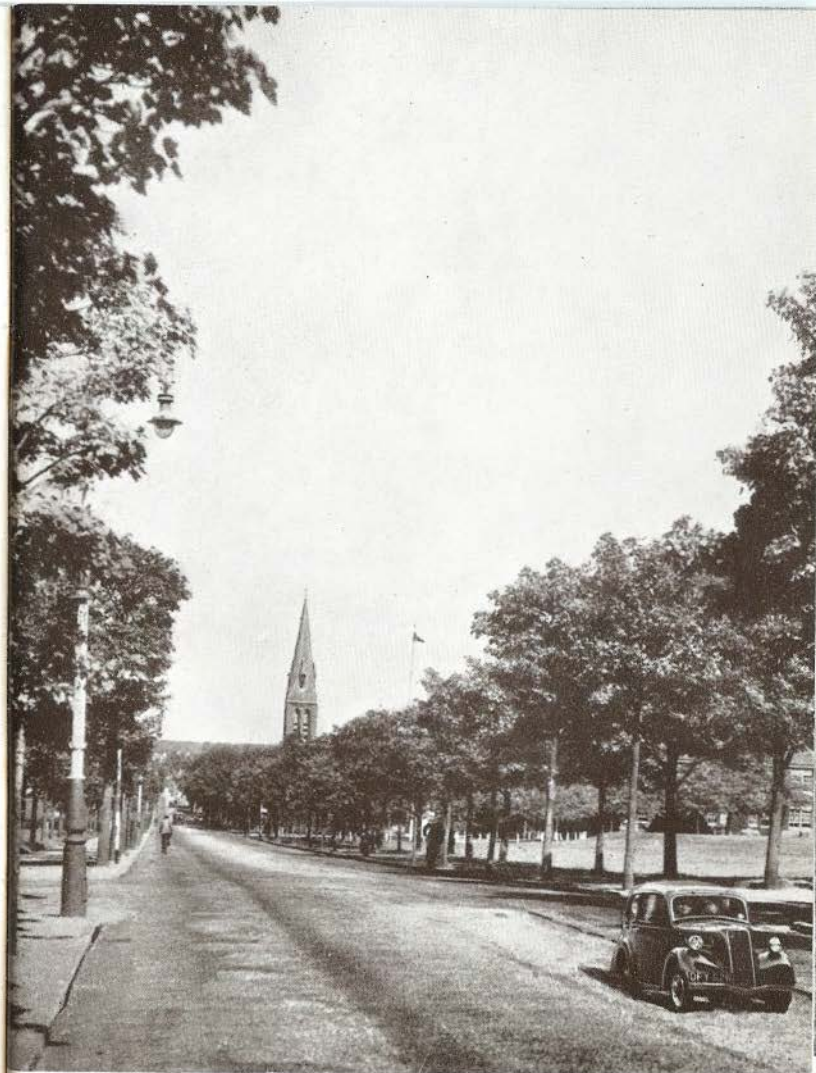
Other knowledgeable people make the Queen's their headquarters for Ascot, The Derby, and half term holidays at Wellington, Charterhouse and nearby Prep. schools.



INFORMATION

Situated in Lynchford Road, overlooking Aldershot Command Parade and Polo Ground; buses stop at door; S.R. Stations, Farnborough Town $\frac{1}{2}$ mile, North Camp $\frac{3}{4}$ mile; forty bedrooms with H. & C.; ballroom and banqueting rooms; lock-up garages; Fully Licensed.

A SIMONDS HOTEL



Queen's Avenue, Aldershot Camp
A Valentine photograph

FROME

***The George Hotel in the
Market Place***

John Foster, the essayist, in the early days of the 19th century, described Frome as "a large and surpassingly ugly place." Either he had distorted vision—perhaps because of a poor meal at The George, which did not then belong to Simonds—or Frome has altered its facial appearance. In point of fact you will find its situation picturesque, the surrounding country full of charm, and, as a stepping off point for the Mendips, you could not better it.

The George is a market town hotel, which pulsates according to the ebb and flow of the local happenings. In many ways it is old fashioned, but that will not interfere with your enjoyment of good country fare and a comfortable bed.

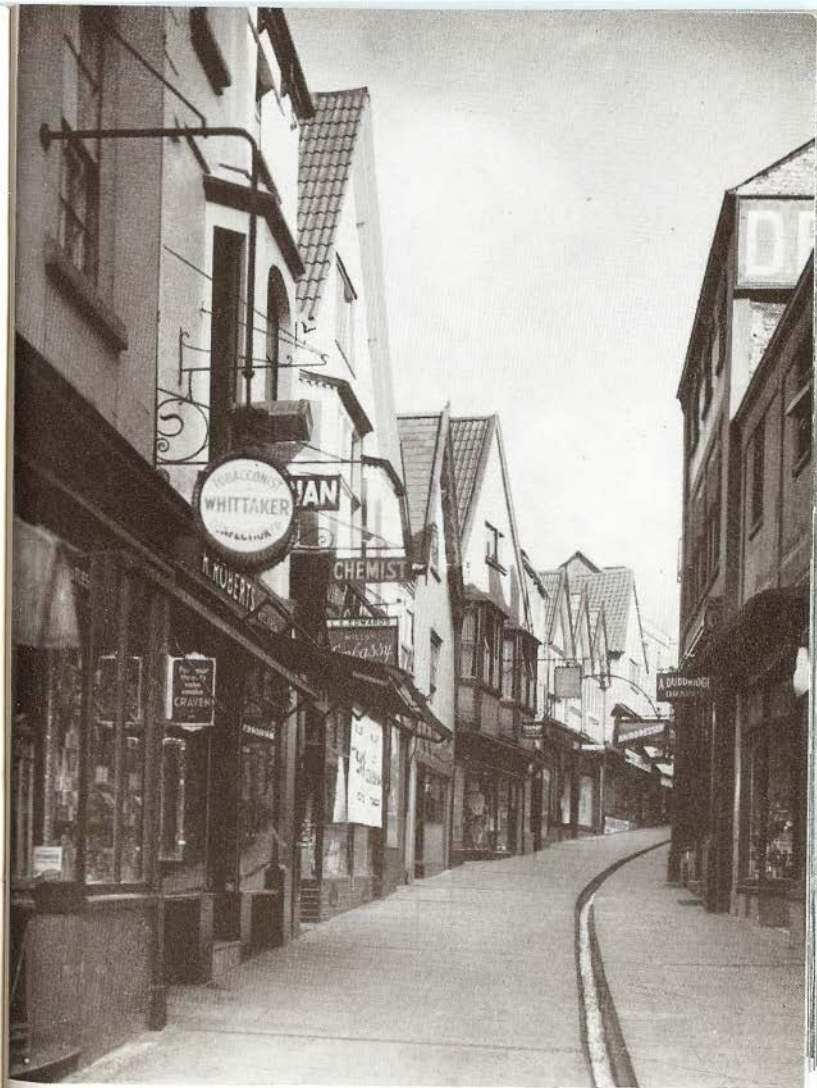
**INFORMATION**

Situated in centre of town; bus stop nearby; G.W.R. Station $\frac{1}{4}$ mile; twelve bedrooms with H. & C.; ballroom; banqueting and stock rooms; market day Wednesday; racing at Bath and Wincanton.

Fully Licensed.

Fires in Bedrooms.

A SIMONDS HOTEL



HUNGERFORD

The Bear Hotel

There can be few hotels in the British Isles with quite as many historical highlights as The Bear Hotel at Hungerford. Early in its career, 1540 to be exact, The Bear Inn was part of Henry VIII's dowry settled on Anne of Cleves, later passing to her successor Catherine Howard. Later, Queen Elizabeth, Charles I and William of Orange were royal guests of The Bear. Here it was that Pepys after dining on June 10th, 1688, wrote, "So come to Hungerford, where very good troutes, eels and cray fish."

But an Inn with a colourful past does not always mean a comfortable present. In the case of the Bear Hotel however, 20th century comfort is happily married with the authentic atmosphere of earlier centuries. Here in dining and bedrooms, you can enjoy old oak beams, original four-poster beds, tapestried bell-pulls.



INFORMATION

On main Bath Road on the corner of Charnham Street; Western Region Station $\frac{1}{4}$ mile; buses nearby; sixteen bedrooms with H. & C.; electric light; central heating; ballroom; games room; garden; garages; Trout fishing.

A SIMONDS HOTEL



Dining Room

At the Bear Inn, Hungerford, the petition for an armistice was brought to William of Orange — Dec. 8th, 1688.



KENNFORD NR. EXETER***The Anchor Inn
Exeter-Torquay-Plymouth Rd.***

For a country-cum-sea holiday, this entirely modern hotel is ideal, being situated on the main road to Torquay, four miles from Exeter and within easy distance of the whole coast line from Dawlish to Brixham.

Immediately from the hotel rise the slopes of the Haldon hills: here on the bracing heights, Devon can be surveyed as you will. Choose your days: Picnics on Dartmoor; a swim suit and the sea; a run to Paignton, Brixham or Dartmouth with lunch at a Simonds Hotel.

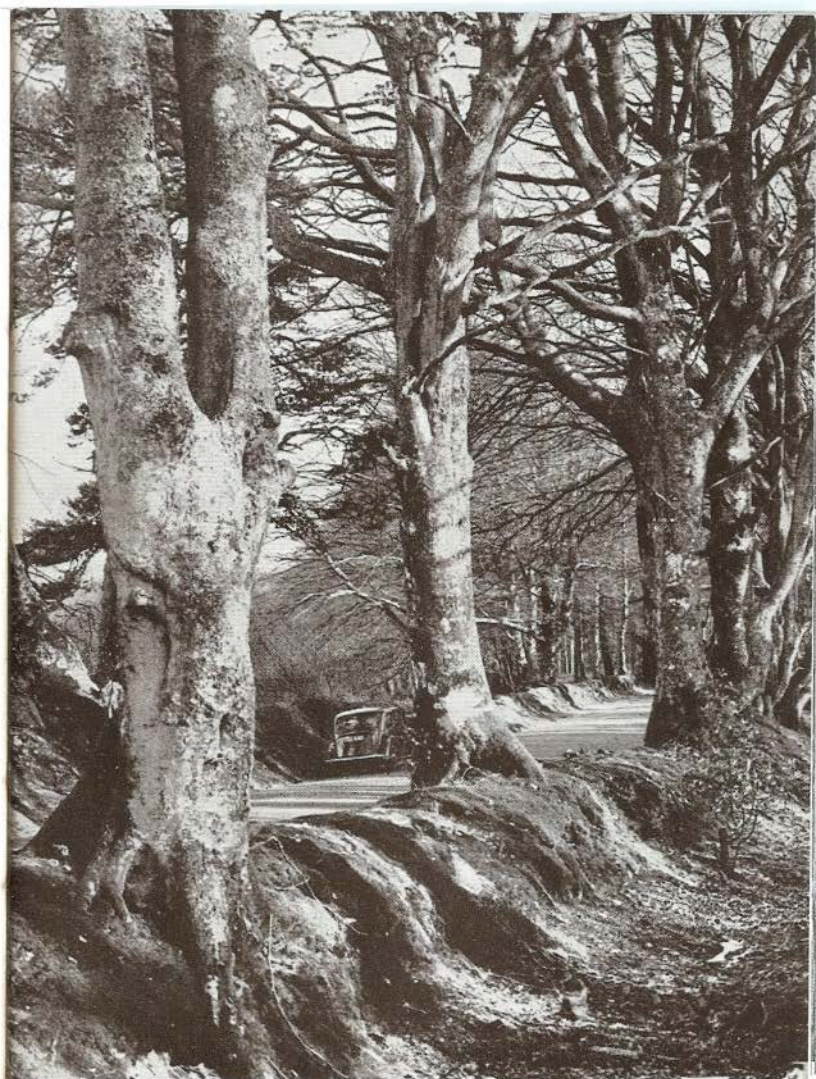
At the end of each day you return to a restful, reasonably priced haven.

**INFORMATION**

Situated on the Kennford By-Pass; bus stop nearby; nearest station Exeter—G.W.R. and S.R. 4½ miles; eleven bedrooms in hotel and annexe, with H. & C.; garage; kitchen and pleasure garden; touring centre for Haldon Moor and Dartmoor.

Fully Licensed.

A SIMONDS HOTEL



LONDON

The "Devereux" in Devereux Court, Strand, W.C.2

This House has a history and was opened in the 17th Century by a Greek named Constantine, as one of London's earliest Coffee Houses. Known then as the Grecian and later the Devereux, it was the meeting place of leading Literary and Scientific Men of the Period; Sir Isaac Newton, Harrison, Steele, Goldsmith and even the immortal Dr. Johnson enjoyed its hospitality.

Like many other historical buildings of London, it suffered damage during the War Years but the Bars and Dining Room are again open and firm favourites with Fleet Street and the Legal Profession.



INFORMATION

At present
under reconstruction

Central for
all parts of
Historical London

Near the Law Courts,
Inner and Middle
Temple, Theatres etc.

Quality Cooking and
Service

Snack Bar

A SIMONDS TAVERN



Fleet Street and the Strand

The Devereux

Set in Devereux Court

on the South side of the Strand immediately

opposite the main entrance to the Law

Courts. It can also be entered from Essex

Street in the Strand.

NEWBURY

***The Bacon Arms Hotel
on the Road to Bath***

If you are a lover of old inns (and who is not?) you will warm instantly to the small Posting House, which has retained the intimacy and character of the past. The Buttery on the right hand side of the coachway entrance, the larger but still companionable lounge bar on the left, the cosy dining room, the residents' lounge above stairs, and the seven compact bedrooms put one on friendly terms with oneself, and after a night or a meal one silently vows "Here one day I will return."



INFORMATION

Situated in Oxford Street; bus service 100 yards; G.W.R. Station 1 mile; seven bedrooms with H. & C.; garage and car park; market day Thursday; trout fishing in River Kennet.

Fully Licensed.
Fires in Bedrooms.

A SIMONDS HOTEL

NEWBURY

***The Queen's Hotel
in the Market Place***

Every week day and especially on Thursday, Newbury's Market Day, this busy Berkshire town throbs with life. Stand where you will, you see the famous Hop Leaf signs swinging in the breeze, whilst the senior member of this brewers' family, "The Queen's," stands proudly prominent in the Market Place. For years it has been an established favourite amongst travellers, some on pleasure bent, and others engaged on commercial intent. Here the word "courtesy" has been handed on from management to management, as befits a house with such a regal name.



INFORMATION

Situated in centre of Market Place next door to Corn Exchange; 150 yards from Cattle Market; G.W.R. Station $\frac{1}{4}$ mile; twelve bedrooms with H. & C.; garage; car park.

Fully Licensed.
Fires in Bedrooms.

A SIMONDS HOTEL

OXFORD

***The Eastgate Hotel
in "The High"***

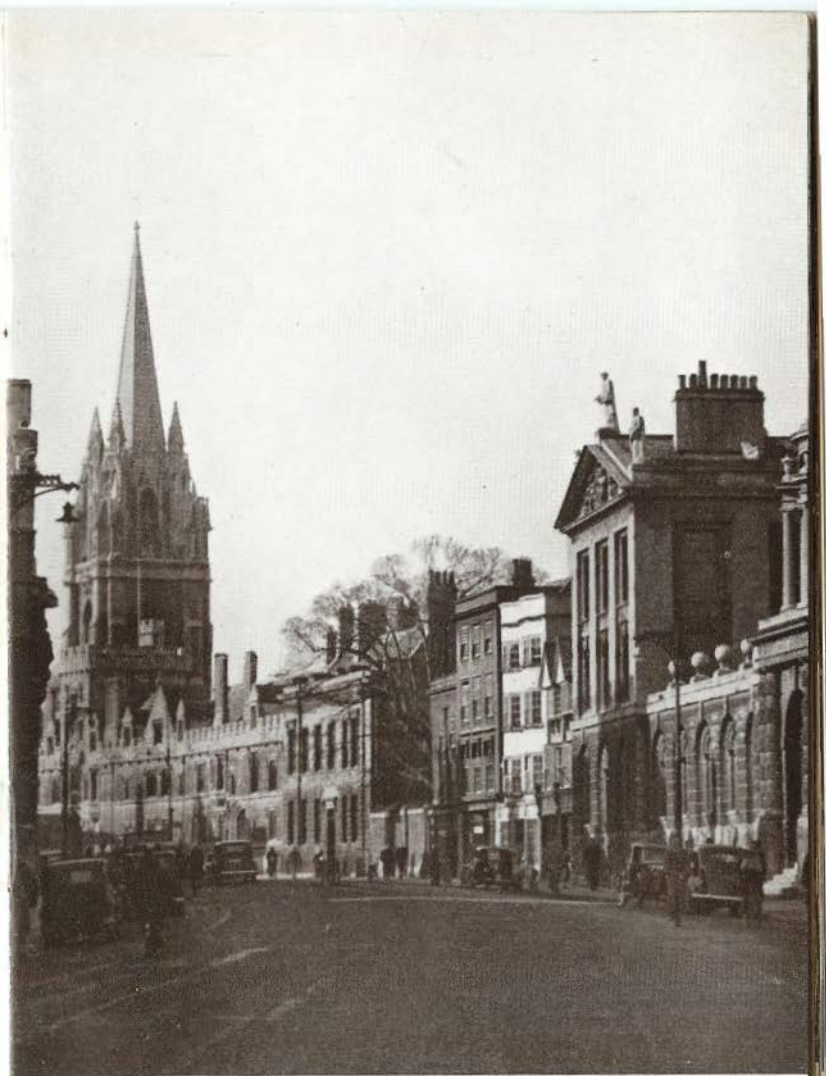
At the entrance to the famous "High," and on the site of the old East Gate of the city, with the greater part of its bedroom accommodation facing on to the quiet environment of Merton Street, the Eastgate Hotel is a fitting base for absorbing the collegiate atmosphere of this famous centre of learning. Close by are the quiet walks beside the River Cherwell and in Christchurch meadows. Further afield are the undulating Cotswolds where ancient villages, hidden from the highway, live on, silently unaffected by the march of time.

**INFORMATION**

Situated in High Street, opposite the famous Longwall Street, near Magdalen College and Botanical Gardens; bus stop nearby; taxi service; G.W.R. Station 1 mile; twenty six bedrooms with H. & C.; comfortable lounges.

Fully Licensed.

A SIMONDS HOTEL



"The High," Oxford

PAIGNTON

***The Gerston Hotel in
Victoria Street***

Looking for an hotel on the Front a stranger will pass it by, for it lies just across the road from the station. But if he had looked within he would have found carpets thick to the tread, capacious armchairs, pleasurable spaciousness, and each cream-walled bedroom modernly furnished and sensibly lit. The general decor of the dining room suggests good food and pleasant service, and The Gerston will suit those who are satisfied with a reasonably priced seaside base impregnated with the Simonds touch.

300 yards from sea.



INFORMATION

Situated on corner of Victoria Street and Hyde Road; 100 yards from bus, rail and taxi services; twenty bedrooms with H. & C. and central heating; private beach huts for residents.

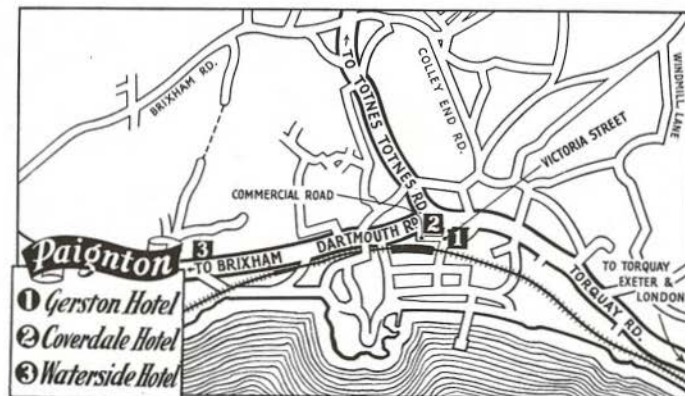
Fully Licensed.

Fires in Bedrooms.

A SIMONDS HOTEL



New Front, Goodrington, Paignton



Please see pages 30, 32 and 34 for details of Hotels in this area.

PAIGNTON

***The Coverdale Hotel on
Dartmouth Road***

For those who prefer the less pretentious hotel, the Coverdale, a recent Simonds addition, is well worth discovering.

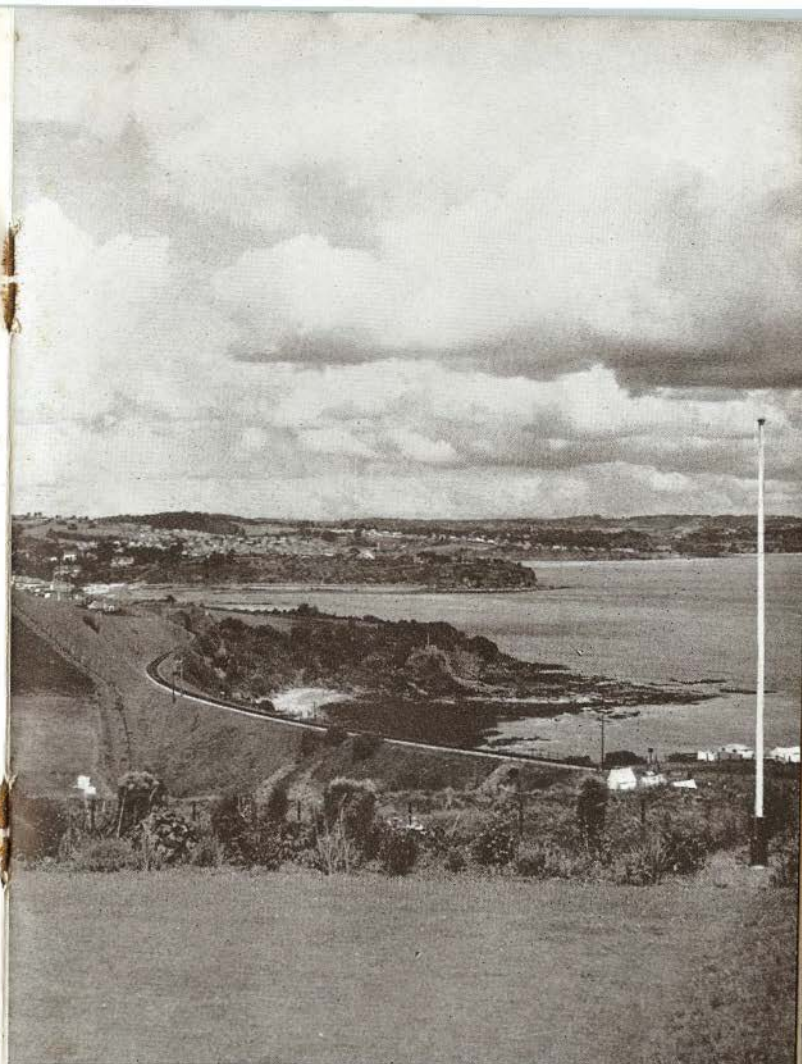
Situated at the corner of Dartmouth Road and Commercial Road and a 300 yards level stroll from the sea, this hotel is really a modern public house with the first floor devoted to comfortable, well equipped and furnished bedrooms, dining room and lounges.

A visitor can therefore remain in seclusion or mingle with the holiday throng at will.

**INFORMATION**

On the corner of the Dartmouth Road & Commercial Road. 100 yards from bus, rail and taxi services. 300 yards from sea front.

14 bedrooms with H. & C. water and central heating. Dining Room and Residents Lounge on first floor. Modern comfort.

A SIMONDS HOTEL

Three Beaches, Paignton
Photo by Valentine, Dundee

PAIGNTON

The Waterside Hotel at Three Beaches

To newcomers, the name is a misnomer until they learn that the Waterside Hotel is the focal centre of the new Waterside estate; a residential district largely patronised by leisured people. In fact its Sherry Bar, with separate entrance, indicates that it was partly designed as a rendezvous for the locality, though its front bar, which has Tyrolean characteristics and designs, draws its regular clientele as well. The pity is that at the moment bedroom accommodation is so limited, for here, in the very centre of the curve of Torbay, there is much scope for daily exploration far beyond the compass of the normal holiday span.

The Waterside Hotel, overlooking Torbay, catches the eye on the Paignton-Brixham road. Modish, modern and yet matured. The large car park indicates that its visitors are drawn from a wide field.



INFORMATION

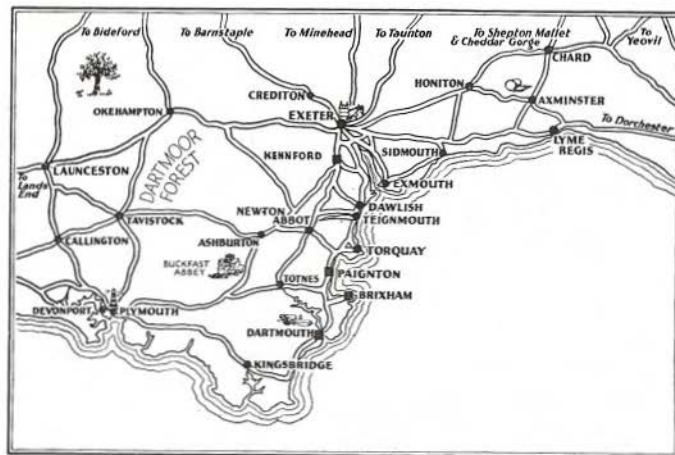
Situated on Dartmouth road, 200 yards from beach; bus stop at door; G.W.R. Station 1 mile; ten bedrooms with H. & C. and central heating; sun terrace and gardens; large car park; private beach huts on Goodrington Sands for residents.

Fully Licensed.

A SIMONDS HOTEL



Waterside Hotel, Paignton



PRINCES RISBOROUGH

The Black Prince Hotel in Wycombe Road

This small hotel is, perhaps, the most humble of the Simonds family and we commend it to the walker and cyclist rather than to the owner of a limousine. Yet its usefulness—if simplicity is accepted—as a centre for the Chilterns is without question.

Standing several hundred feet above sea level, many a brain-tired Londoner has been able to blow away mental cobwebs here. It is central for a walk or cycle ride down to the Thames Valley (Marlow 13 miles; Henley 21; Maidenhead 19; Oxford 21) or to the Vale of Aylesbury to potter round such country market towns as Aylesbury (9 miles), Tring (10 miles) and Leighton Buzzard (19 miles). Amongst local interests is the Church with 15th century monuments.



Page Thirty-six

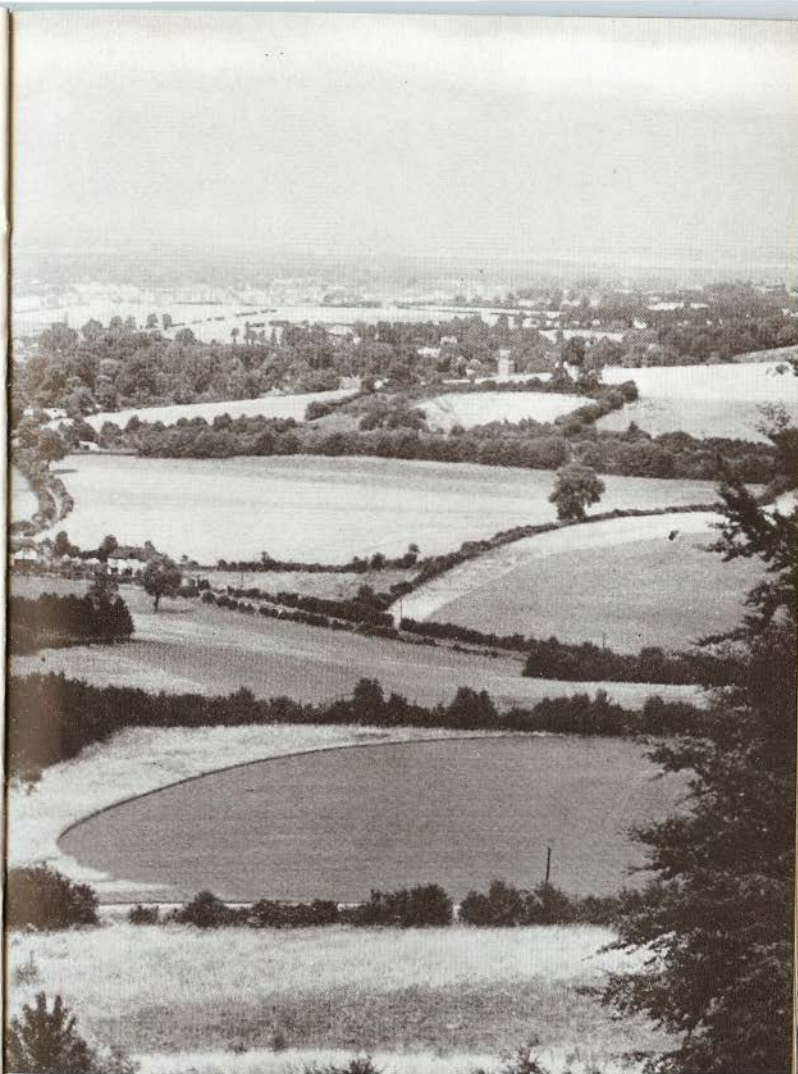
INFORMATION

Situated on the fringe of the town on the High Wycombe-Aylesbury road; buses stop at door; G.W.R. Station $\frac{1}{2}$ mile; eight bedrooms with H. & C. Centre for Chiltern Hills.

Fully Licensed.

Fires in Bedrooms.

A SIMONDS HOTEL



View from Whyteleaf Cross

READING

The Ship Hotel in Duke Street

There is something about a ship which engenders affection in man's heart, and it is significant that at this busy Ship Hotel of Reading the visitors' book will reveal the names of many who for forty years and more have returned time and time again to this hotel which has served them so well. Old timers remember the days when bedroom slippers and candles were served out to each visitor on arrival. To-day they enjoy twentieth century characteristics of comfort and modern appointments, and it is no wonder that the Ship has become the favourite place for dining-out. Without being palatial, the Ship is practical, and it is fitting that in this home of good beer it can be said of the Ship "This is a Simonds Hotel."



Page Thirty-eight

INFORMATION

The leading business and family hotel; bus service covering a wide area; G.W.R. and S.R. Stations five minutes walk; forty three bedrooms with H. & C.; Stock rooms; rooms for parties; garage.

Fully Licensed.

Fires in Bedrooms.

A SIMONDS HOTEL



Dining Room, Ship Hotel, Reading

READING

BAR AND RESTAURANT

**The Cheddar Cheese
in Broad Street**

Telephone 381811

Luncheons
Snack Bar
Popular Tariff

Dinners
Lounge Bar
Non-Residential

READING

The Falcon Hotel

Here is a gem of modern small hotel architecture. Wide opening view windows from ballroom, dining-room, lounge, bar, and from most of the bedrooms, all looking over the spacious green of this private airport.

For this hotel was designed and built for the comfort of travellers by air to and from Reading. But with the increase in size of machines, and the necessity for vast tarmac runways, the airport is now only used for the smaller private and club machines. There are, however, no tarmac runways to spoil the outlook.

Architecturally, decoratively and actually the atmosphere of The Falcon is modern and gay, as already the discriminating of Reading and its neighbourhood, as well as private fliers farther afield, have discovered.



INFORMATION

20 modern bedrooms with H. & C.; central heating; electric light; built-in furniture; sun terrace; garden; ballroom.

Reading-Maidenhead road 1 mile.

Stations: (Reading—G.W. & Southern)
5 miles; Wokingham
5 miles

A SIMONDS HOTEL



READING

The Falcon Hotel

READING AERODROME, WOODLEY

Nr. READING, Berks.

Telephone: SONNING 3168



Dining Room, Marquis of Lorne, Reading

READING

BAR AND RESTAURANT

The Marquis of Lorne in Friar Street

Telephone 317611

Luncheons	::	Snack Bar	::	Popular Tariff
Dinners	::	Lounge Bar	::	Non-Residential

BERKSHIRE

Reading 72045

READING

The Grosvenor House Kidmore Road, Caversham

This charming house is situated just where the northern outskirts of Reading meet the hills of the Chiltern countryside; a pleasant drive-in from Henley or Oxford.

Although only a few minutes from the centre of the town, it is more like a country club than an ordinary Inn; it has a ballroom and banquetting hall and is well worth adding to your list of regular calls.

There is a spacious garden, beautifully laid out, as well as four hard tennis courts and, finally, three modern bars which deserve special mention.

The ideal spot for banquets, dances, wedding receptions, Staff and Club Outings and functions of every description.

Non-residential



INFORMATION

Non-residential;
ballroom and
banqueting hall;
billiards room;
games room;
gardens; tennis
courts; car park.

A SIMONDS HOUSE

SALISBURY

The Haunch of Venison

Ashley Courtenay writes . . . "An ancient Chop House and Grill, dating back to 1320—a black oak Bar with eighteen pewter taps, which in olden days connected to casks of Sherry and Port; a baking oven in which, 200 years ago according to tradition, a man's hand, cut off at the wrist, and a marked playing card were found. Aren't these sufficient ingredients for the background to an historical novel?"

But since visitors to the Haunch of Venison will be going there for food and drink and not novel-writing, it is good to know that the reputation of this ancient Chop House has been fully maintained, if not enhanced, under the ownership of H. & G. Simonds.

One likes to think that the ghosts of those past days can still feel at home. For although the dining room and former bakehouse have been re-furnished to modern standards, the style and atmosphere of "The Haunch" are unspoilt.

INFORMATION

- Non-residential.
- Central situation.
- Diningroom to seat 40.
- Open until 10 p.m.
- Buses and station nearby.

A SIMONDS TAVERN



Haunch of Venison, Salisbury

STAINES

***The Angel Hotel
in the High Street***

Strategically Staines fits into the scheme of things. It lies on the Thames; is close to Windsor, Ascot, Kempton Park and the new Airport at Heath Row, and, in consequence, The Angel, an old Dickensian hostelry which has held its licence continuously for 300 years, has been re-designed in particular to meet the needs of passing motorists.

Lunches and Dinners, Snacks, a "quick one," or the more leisurely social round, the Angel management take everything in their daily stride. Business men, too, bound for London, have been quick to discover that there is much to be said for making their Headquarters at the Angel.



INFORMATION

Situated in the main shopping centre on A.30 route, 19 miles from London; buses stop at door; G.W.R. and S.R. Stations $\frac{1}{2}$ mile; fourteen bedrooms with H. & C.; comfortable lounges; car park; boating and regattas.
Fully Licensed.
Fires in Bedrooms.

A SIMONDS HOTEL

STAINES

***The Railway Hotel fronting
on Kingston Road***

Every Simonds house has a purpose. Some cater primarily for the holiday, others for the traveller, be he or she on business or pleasure bent, and the Railway Hotel has a definite appeal. Facing the Southern Railway Station it is becoming increasingly popular among discerning motorists who have learnt the wisdom of leaving their cars outside the Metropolis and completing their journey by train. Time, petrol and tempers are saved with a friendly Simonds house to shelter and feed them.

There must necessarily be delay in bringing the structure and equipment into line with that of other "Simonds Hotels," but much has been done to make the rooms comfortable and cheerful.



INFORMATION

Buffet & Bar facing S.R. Station.
Restaurant, Bars and Hotel entered from Kingston Road.
9 bedrooms.
Car Park.
Fully Licensed.
G.W.R. Station $\frac{1}{2}$ mile.
S.R. 100 yards.

A SIMONDS HOTEL

STAINES

The Pack Horse Hotel

Right in Staines, within easy reach of Town. On tap, all the charm and gaiety that goes with "living on the Thames." Such is the Pack Horse Hotel.

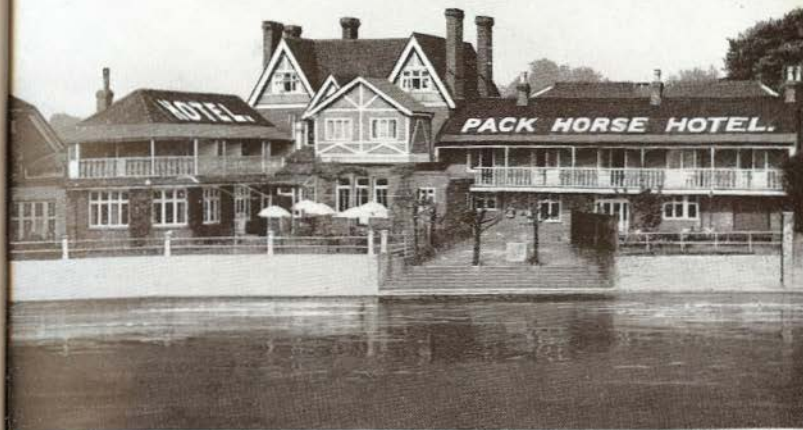
Here from your bedroom window, you can take one last look at the punts, the electric canoes and the skiffs as they glide by. Or a belated swan ruffling his way against stream. Maybe you will hear laughter or distant singing. And if you wait up until the garden fairy lights are turned off you will witness a new scene—the reflection in the Thames of the moon and the stars.

Here the word "Innkeeper" has a welcoming sound, with surety of good food, modern comfort and a glass of the best.

Nor should mention be omitted of the modern building adjacent to the hotel consisting of Ballroom, Bar, Cloakrooms and Stage, with its full-length windows on the riverside, and which, by an ingenious arrangement of carpeting, can be used entirely for dancing on the sprung floor, for a banquet, or for a combination of both.

INFORMATION

22 bedrooms with H. & C.; electric light; gas fires; ballroom and banqueting room for 200 persons; riverside terraces and lounges; car park; G.W. and Southern stations $\frac{3}{4}$ mile.

A SIMONDS HOTEL

Ballroom, Pack Horse, Staines

STOKENCHURCH

The King's Arms Hotel on the Oxford Road

As a village, Stokenchurch can lay no claim to beauty, and the King's Arms, which stands back from the main London-Oxford road, has a rather formal appearance, yet it is unexpectedly inviting within.

Stokenchurch, too, fits well into the programme of those wanting a base for exploring the Chilterns and Thames Valley. That lovely curve of the river from Henley to Marlow is less than ten miles away, and the Chiltern country below is riddled with lanes and bridle paths which bring one to unexpected treats. Make note of Stoner, Fingest, Hambledon, to mention just three. To the west is the high ground of the Bledloe range with the small Simonds inn at Princes Risborough as an excuse or an objective.



INFORMATION

On main Wycombe-Oxford route; buses stop at door; G.W.R. Station Aston Rowant 2 miles; ten bedrooms with H. & C.; room for touring parties; car park; garage; centre of furniture and chair making industry. Fully Licensed.

A SIMONDS HOTEL



SUNNINGDALE

The Sunningdale Hotel, near the Station

On that great Trunk Road, the A.30, which winds its way through seven counties, from London to Land's End. With safety you can add this satisfying Sunningdale hotel to your list. Its lounge bar on the right of the entrance takes on at times the atmosphere of a local club. Many well known people have lunched and dined in the spacious dining room, which looks out on flower bordered lawns. Its few bedrooms are in constant demand, for hereabouts there is a whirl of social occasions . . . Ascot Week, Windsor Races, Epsom. Adjacent are some of the best golf courses in the South of England — Sunningdale, Wentworth, and Royal Berkshire.



Page Fifty-two

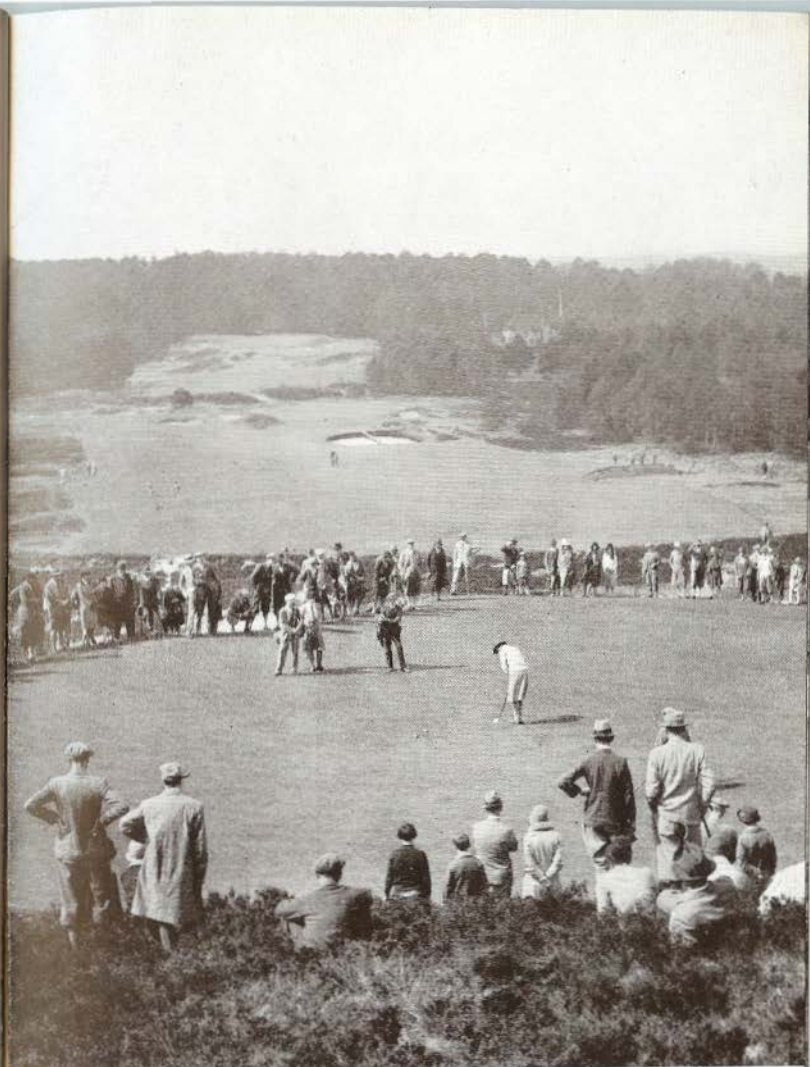
INFORMATION

Situated 50 yards from S.R. Station; buses stop at door; ten bedrooms with H. & C. Pleasure gardens; garage adjacent; ideal for golfing week-ends in comfort; riding stable nearby.

Fully Licensed.

Fires in Bedrooms.

A SIMONDS HOTEL



The Golf Course is close to Hotel

SWINDON

***The Goddard Arms Hotel
in the Old Town***

There are two Swindons, even though they be interlocked. The new town, where the beginning and end of everything is the Railway—its station and works—and the old town where the social centre of attraction is the Goddard Arms with its magnificent Ballroom and accompanying reception rooms, which have recently been redecorated and refurnished.

Much of the old world character of this market town hotel has been retained, so do not look for twentieth century frills and fineries. Here the comfort is deep seated and soft bedded.

There is a ring of genuineness about the menus, and if you frequent the Bar you will find the atmosphere convivial.



INFORMATION

Situated in the Old Town at junction of Marlborough—Hungerford—Cirencester—Bath road; buses pass door; G.W.R. Swindon junction 1 mile; eighteen bedrooms with H. & C. and central heating; ballroom; banqueting and stock rooms. Fully Licensed.

A SIMONDS HOTEL



Old Town, Swindon



The County Ball Room at the Goddard Arms Hotel, Swindon

WARGRAVE

St. George and Dragon Hotel

Old Father Thames sweeps by its pleasant flower-set garden. The village street winds and narrows until a car park invitingly suggests this Simonds sanctuary. At times one feels far removed from the work-a-day world, yet the St. George and Dragon has its coterie of businessmen who go daily to and from London's West End and City. Some of the finest river scenery is hereabouts. Henley is, but three miles distant and The Chilterns survey your leisure and beckon you to them.



Page Fifty-six

INFORMATION

Situated on the outskirts of village on the main Henley-Twyford - Guildford road; buses stop at door; G.W.R. Station $\frac{3}{4}$ mile; nine bedrooms with H. & C. Sun lounge; garden; landing stage for private craft; boat-house; car park and lock-up garages. Fully Licensed.

A SIMONDS HOTEL

The St. George and Dragon Hotel from river

Many famous men have told of Wargrave, including Dickens, Tennyson and Kingsley, but of recent years The St. George and Dragon has had an added stimulant to posterity through Jerome K. Jerome, who mentioned the famous sign (preserved inside the hotel) in his classic "Three Men in a Boat."

There are SIMONDS HOTELS in the following Thames-side places.

STAINES	<i>The Angel Hotel</i> <i>The Pack Horse Hotel</i>
EGHAM	<i>The Anglers Hotel</i>
WARGRAVE	<i>St. George & Dragon Hotel</i>
READING	<i>The Ship Hotel</i>
OXFORD	<i>The Eastgate Hotel</i>
EYNHAM	<i>The Evenlode House Hotel</i>

WARMINSTER

The Bath Arms Hotel in the Market Place

One's first impression may be of just a quiet and sleepy Wiltshire town without one building of any real interest—the Bath Arms excepted! But stay there a night or two and your opinion will change. In the immediate neighbourhood are many military centres, and Warminster lies on a line of route from the North to South and vice versa. The "Bath Arms" has become a base for leisurely exploration of the hidden vales of Salisbury Plain, of pastoral Somerset, and of the architectural loveliness of Bath, Wells, Glastonbury, Sherborne, Shaftesbury and Salisbury, within a twenty mile radius. Longleat Park, on the outskirts of the town, justifies, in itself, a night or two's stay at the Bath Arms.



Page Fifty-eight

INFORMATION

Situated in the main shopping centre on Salisbury-Bath road; bus stop nearby; seventeen bedrooms with H. & C. Large dining room; separate room for private parties; own garden produce; car park; lock-up garages.

Fully Licensed.

Fires in Bedrooms.

A SIMONDS HOTEL



Longleat Park

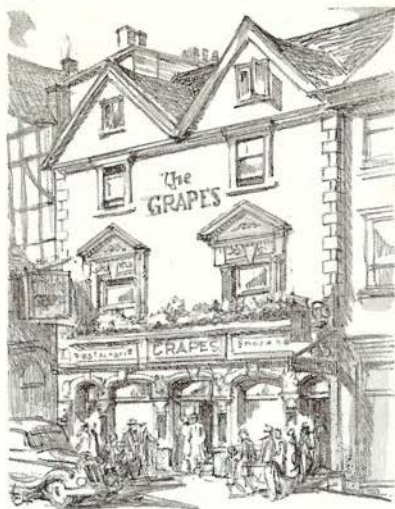
WINDSOR

***The Grapes Bar and Restaurant
in Thames Street***

To Windsor come Kings and Queens, and their subjects from the world over. In no other town in Great Britain is there such a concourse of strange tongues and faces in the height of the tourist season.

In your visit to this Royal Borough a call at the Grapes makes a fitting interlude in your wanderings further afield to Windsor Great Park, to Eton College and to Frogmore—and from a day basking on the sunny waters of old Father Thames.

Non-residential

**INFORMATION**

Situated in Thames Street, opposite Windsor Castle; buses and Green Line coaches stop at door; stations—G.W.R. 50 yards, S.R. 300 yards; restaurant; snack bar; lounge bar; non-residential. Fully Licensed.

A SIMONDS TAVERN

Windsor Castle

WOKINGHAM

The Bush Hotel in the Market Place

This small but thriving market town, 7 miles from Reading and Ascot, could be described as a halting place between the two. In actual fact knowledgeable motorists travel considerably further distances to visit The Bush, which is famed for its catering. So much so that it is always advisable to book your table in advance. The Bush is well worth a visit even if it is only for refreshment, for it has old world characteristics and a friendly countenance.

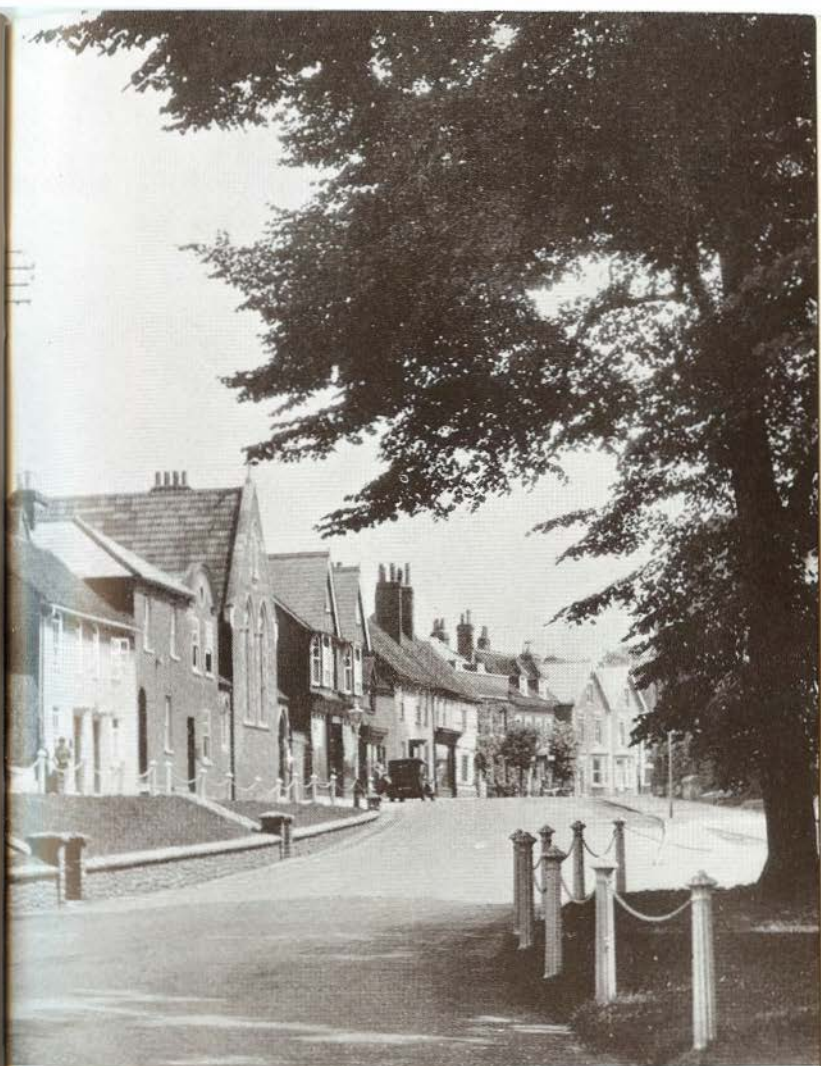


Page Sixty-two

INFORMATION

Situated in Market Place; buses stop at door; S.R. Station $\frac{1}{2}$ mile; four bedrooms with H. & C.; large dining room and lounges; market held in hotel yard every Tuesday. Fires in Bedrooms. Fully Licensed.

A SIMONDS HOTEL

The Terrace, Wokingham
A Photochrom photograph

We are indebted to Mr. Ashley Courtenay for permission to reproduce the descriptive matter in the preceding pages from his Book "Let's Halt Awhile" 1949 issue.

Published by

H. & G. SIMONDS LTD.

HOTELS & CATERING DEPT.

19-21, CASTLE STREET
READING

Telephone: READING 3431

Also, from April, 1949

NEWPORT, Mon.

The Queen's Hotel
Bridge Street

Telephone Number 2171

Now being renovated and re-furnished.

35 Bedrooms with Hot and Cold Water.

Central Heating.

Dining Rooms. Lounges. Writing Room

Bars and Cocktail Lounge.

Banqueting Room Stock Rooms.